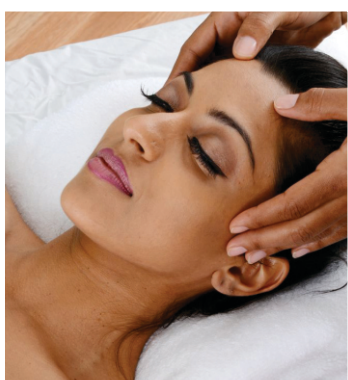
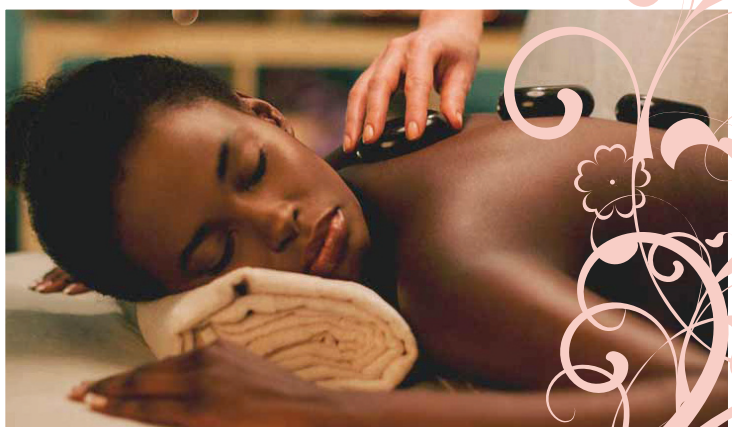




MOSHA

Wellness Spa



Hair Removal Treatments

Waxing	
Lip/Chin/Eyebrows 15mins	P110
Full face 30mins	P220
Half legs 30mins	P280
Full legs 60mins	P360
Underarms 15mins	P130
Half arms 30mins	P200
Full arms 45mins	P280
Brazilian 30mins	P250
Hollywood 30mins	P360
Back/Chest 30mins	P340

Enhance your natural beauty

Eye Lash extension singles	P500
Eye Lash removal	P110
Eyelash tint	P110
Eyelash refill	P280

Eyebrows

Eyebrow Tint	P110
--------------	------

Makeup

Bridal	P1340
Every Day	P670

Hand Treatments

Mosha Manicure 60mins	P280
Soak off gel 45mins	P120
Acrylic/tips soak off 45mins	P200
Gel overlay 60mins	P320
Soak off gel and overlay 105mins	P400
Gel tips 120mins	P450
Acrylic gel overlay 120mins	P400
Acrylic gel extension 120mins	P550
Manicure with gel	P450

Express Nail Care 30mins

File and paint	P180
Buff and shine	P150

Feet

Mosha pedicure 60mins	P390
Mosha pedicure with gel overlay 120mins	P450
Medi heel pedicure 90mins	P550

Add-on to your hands and feet treatments

Nail fix	P 45
Paraffin wax dip 15mins	P120

Nail art

Art per nail	P 15
--------------	------

Theravine Facials

Theravine™Balancing facial 60mins P 770

A deep-cleansing facial customised to gently remove surface impurities followed by a personalised mask while utilizing specially selected aromatic botanicals for restoring balance to the skin, leaving your skin soft and restored.

Theravine™Hydrating facial 90mins P 990

A facial designed for extreme relaxation with the aromatic scent of essential oils designed to deeply hydrate your skin, leaving you with a radiant complexion.

Theravine™Professional peeling facial 60mins P 1120

The 4 tier professional-grade step-up peel system of various percentage Lactic and Glycolic Acid with Charcoal and Tartaric Acid assists to stimulate the skin's cell turnover for a more youthful and rejuvenated skin. Regular treatments improve the skin texture, fine lines and wrinkles, superficial imperfections and pigmentation while giving the overall complexion a subtle glow.

Ultravine™Advance cellular gold facial 90mins P 1680

soft 24K gold and diamond dust collagen film mask, promotes the skin's DNA repair system while luxuriously soft and delicately scented creams, serums and balms transport your skin to an advanced state of renewal.

Melanovine™Pro-Brilliance brightening facial 60mins P 880

Diminish uneven skin tone while minimizing the appearance of fine lines and wrinkles. Targeting hyperpigmentation with scientifically advanced actives and natural lightening plant extracts, this treatment will leave your skin looking luminous and feeling radiant

Kalahari Facials

Phytic clay mask treatment 60mins P 770

The Phytic Clay Treatment Mask is a pro-active treatment that contains Mandelic, Glycolic acid and Phytic acid derived from Soybean extract. The treatment mask effectively targets hyperpigmentation, de-ageing and rejuvenation of the skin leaving it visibly brightened and rejuvenated.

Dermaplane Pro exfoliating facial P 770

Dermaplaning is a method of exfoliation that consists of using a 10 gauge scalpel to gently scrape off the top layer of dulling dead skin cells in order to reveal a smoother, brighter complexion.

Vitamin C facial 90mins P 1120

This is an ultra-firming, anti-ageing treatment rich in natural, organic Vitamin C and essential antioxidants. Extracted directly from the African Baobab fruit, our Vitamin C boosts collagen and elastin regeneration, making your skin appear visibly firmed, brightened and tightened. Suitable for all skin conditions.

TCA & Chemipeel treatments & CIT 60mins P 1120

TCA Treatments will effectively refine the appearance of fine lines and wrinkles, enlarged pores and even out skin discoloration. The skin will appear visibly smoother, detexturised and radiant.

Dermapen treatment 90mins P 1680

(Specialised treatment by appointment Only)

professional grade dermal micro-needling pen creates precise piercings into the epidermis allowing the stimulation of naturally occurring growth factors and fibroblasts, which have a regenerating effect on both the dermis and epidermis. This completely safe and effective professional microneedling system treats advanced skin concerns, obtains specific skin goals and delays the indicators of skin aging.

Slimming Program

Lipogon

This is a mixture of the existing Lipogon Injections Plus XT Cocktail to boost the fat burning process. It contains Amino Acids that assist the PPC to penetrate the fat cell faster.

P527.50 per square 10x10cm min

per square 4 areas P 2110

Cellulite per square P 450

Full Day Spa Treatment 8 Hours P 2980

Includes:

- Manicure, pedicure with gel & paraffin dip
- Vitamin C or intensive exfoliating facial 90mins
- Swedish full body massage 90mins
- Jacuzzi/steam room or sauna - 30mins
- Breakfast & Lunch

Half Day Spa Treatment 5 hours P 2240

Includes:

- Manicure & pedicure
- Massage & facial balancing
- Light lunch or dinner

Half Day Spa Treatment 5 hours P 2240

Includes:

- Full body scrub & Massage 90mins
- Facial & Pedicure
- Jacuzzi/steam room or sauna 30mins
- Light lunch or dinner

Spa Group Events 4 hours Per person P 900

Minimum 10 people

Includes:

- Snack on arrival
- Foot scrub & foot an leg massage
- Neck and back massage

Spa Group Events 4 hours Per person P 1000

Minimum 10 people

Includes:

- Snack on arrival
- Swedish full body massage
- Foot & leg scrub and massage

Couples Spa package P 3360

Includes:

- Swedish massage
- Mini Facial
- Pedicure & Complimentary lunch for 2

Yoga Classes - Per Class P 100

Join us every Tuesday & Thursday from 6pm to 7pm

Swedish Therapy Massage

A light to medium pressure massage using classic massage movements to improve blood circulation, ease muscle aches and tension improve flexibility and reduce stress

Swedish back massage 30mins P370

Swedish full body massage 60mins P540

Swedish full body massage 90mins P820

Swedish full body massage 2hrs P1010

Aromatherapy massage therapy

A Gentle massage that stimulates the lymphatic system while bringing a sense of calm and well-being to engulf your mind, body and soul.

Aromatherapy back massage 30mins P430

Aromatherapy full body massage 60mins P620

Aromatherapy full body massage 90mins P870

Deep Tissue Massage therapy

An intense massage that works core deep tissue for people requiring extra pressure in the massage techniques applied. Stretches are done before and after the massage to improve muscle tension, circulation and pain relief.

Deep tissue back massage 30mins P450

Deep tissue full body massage 60mins P710

Deep tissue full body massage 90mins P920

Hot Stone massage therapy

Using heated Basalt stones, muscles are gently heated to relieve muscle pain and relax, allowing a deeper penetration into the core of the muscle.

Hot stone full body massage 60mins P670

Hot stone full body massage 90mins P900

Hot stone full body massage 160mins P1110

Pregnancy massage

A massage using specific prenatal techniques, to help increase circulation, relieve tired muscles, mental and physical fatigue. massages can only be done after 22 weeks.

Pregnancy back massage 30mins P470

Pregnancy full body massage 60mins P760

Thai Massage

Uses acupuncture points to stretch and loosen muscles in order to provide relief, to stretch and loosen tightened muscles, to release tension and relieve joints.

Thai massage 30mins P470

Thai massage 60mins P760

Thai massage 90mins P920

Add-on

Sauna or Jacuzzi 30mins P340

Hot stone 30mins P280

20% off on all full body massages (Wednesdays only)

20% Pensioners discount

Mosha Body Treatments

Foot and leg massage 20mins P340

A relaxing foot massage to relieve tension in the feet and lower legs This treatment involves a foot ritual with a soak and scrub followed by a soothing pressure point massage to ease tired legs and feet

Neck and Shoulder massage 30mins P340

This massage focuses purely on the neck and shoulder areas to relieve tension of these commonly over stressed muscles.

Indian Head massage 30mins P340

Combines techniques to include various massage strokes and acupressure points. Treatment includes kneading and probing of the neck and shoulder areas. The scalp is then massaged using squeezing, tapping, rubbing or prodding motions.

Reflexology 30mins P360

Reflexology 45mins P450

This is an ancient treatment that focuses on the nerve locations on your feet to treat the entire body. it is a relaxing pressure point foot massage that balances the body to re-establish your energy and healing flows that relieve stress and restores harmony.

Body Exfoliation

Invigorate your skin with a full body exfoliation, eliminating excess surface skin cells. Your skin is left soft, nourished and ready to absorb nutrients.

Mosha Sugar scrub body wrap 2hr P1120

Add-On

Sauna or Jacuzzi 30min P340

ACKNOWLEDGEMENT

Clients are kindly asked to acknowledge the following when making bookings and visiting the spa.

- * Booking should be made in advance
- * Clients should arrive at least 10mins before their scheduled treatment time
- * Please notify your therapist of any medical condition you have which may be affected by a treatment eg. pregnancy, heart conditions, product allergies, epilepsy and diabetes.
- * Please bring any concerns to the attention of your therapist.
- * Please pay a 50% deposit for packages to secure your booking
- * No Further discounts added to treatments that are already discounted e.g spa packages, Wednesday specials, monthly specials and pensioners discounts.
- * Please note all prices are VAT inclusive

Operating Hours

Mon to Sat 9am - 8pm | Sundays 9am - 5pm

Mosha Wellness Spa

Avani Resort 4727 Chuma Drive, Gaborone

Tel: 3164472 | 3616052

moshabeautyspa@gmail.com